



TRANSFORM WITH DIGITAL TECHNOLOGY

Differentiate your practice · Improve predictability · Reduce costs · Enhance patient experience

 HENRY SCHEIN®

Save an average of
\$121.50 per patient*

Want to make your practice more efficient? Differentiate your practice from others?

Practices with a digital impression scanner save an average of \$121.50 per patient* over manual impression taking!

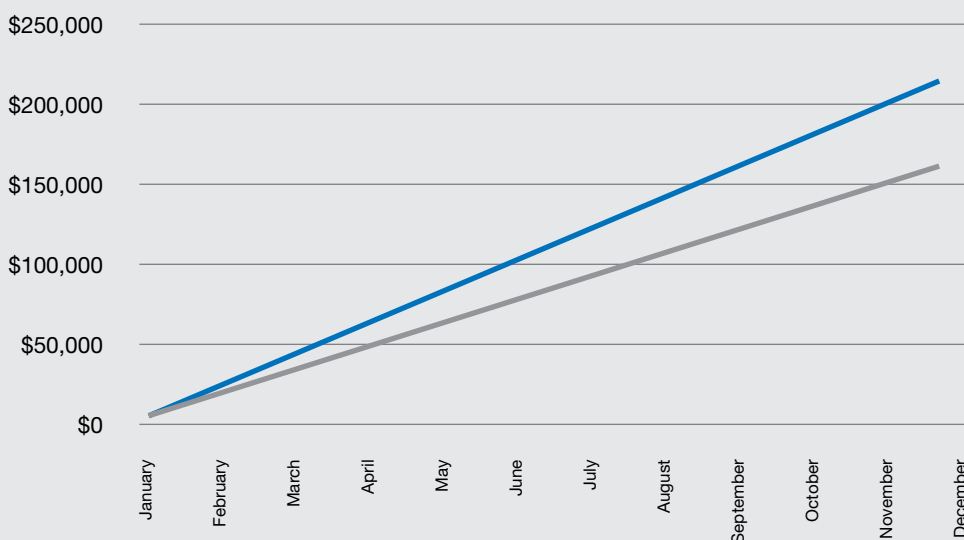
This is achieved by...

- Reduced impression material costs
- Eliminating shipping expenses for models
- Suffering fewer remakes and time delays
- Better utilisation of Dentist and Assistant time

All while providing your patients a more comfortable and engaging experience, leading to increased case acceptance!

Interested in increasing your bottom line by nearly \$40k per year by switching to digital scanning?

Growth in Gross Profit Scanner Vs Analogue*



Calculations above show the additional GP attainable by going digital. Calculations based on 10 crowns, 2 partial dentures and 2 implant crowns monthly.



Speak to your Henry Schein Equipment Specialist about
an in-practice scanner demo today - your patients,
and your bottom line, will thank you!

*Data sources from "2018 Survey of Dental Fees"
by the American Dental Association.

Have you considered renting your technology?



Keep your digital equipment up-to-date with the latest technology and manage your outgoings...

- Update your technology at end of term
- Free up your capital - rental payments are a tax-deductible expense
- Options to buy or extend at end of term
- One off monthly fee – no unexpected costs



Henry Schein Financial Services offer packages tailored to meet your specific needs, and payment terms that make new investment achievable. With one of our flexible terms, you'll find a finance solution that works for you.

With automatic approval of up to \$500,000 for all New Zealand registered dentists with a clear credit history and same day approvals....it couldn't be easier!

Competitive Rates

- 9.3% (Based on spend of \$50k-\$200k)
- Obligation free quote through your HSNZ Equipment specialist

Route 66

- 6 months deferred payment
- 6 months \$99 payment
- 36 months equal payments on balance

Deferred Payment

- Talk to us about deferred payment options

Flexible Terms

- Flexibility to tailor package to your needs
- Terms, deferred payments, payment structures



Edward Harrison
021 769 069
edward.harrison@henryschein.co.nz



Paul Macdougall
022 342 4900
paul.macdougall@henryschein.co.nz



Daniel Els
021 750 609
daniel.els@henryschein.co.nz



Michael Findlay
022 016 5898
michael.findlay@henryschein.co.nz

For more information, or to request a quote,
please contact your Henry Schein
Equipment Specialist.

Terms and conditions apply: Henry Schein delivers finance products via a third-party provider whose normal lending criteria and loan terms for secured lending apply.
Pre-approval is based on the information disclosed to Henry Schein.

Which TRIOS scanner is right for you?

There's a 3Shape TRIOS for everyone. Whichever model you choose, you benefit from industry-leading scanning experiences, and unparalleled clinic-to-lab workflows.

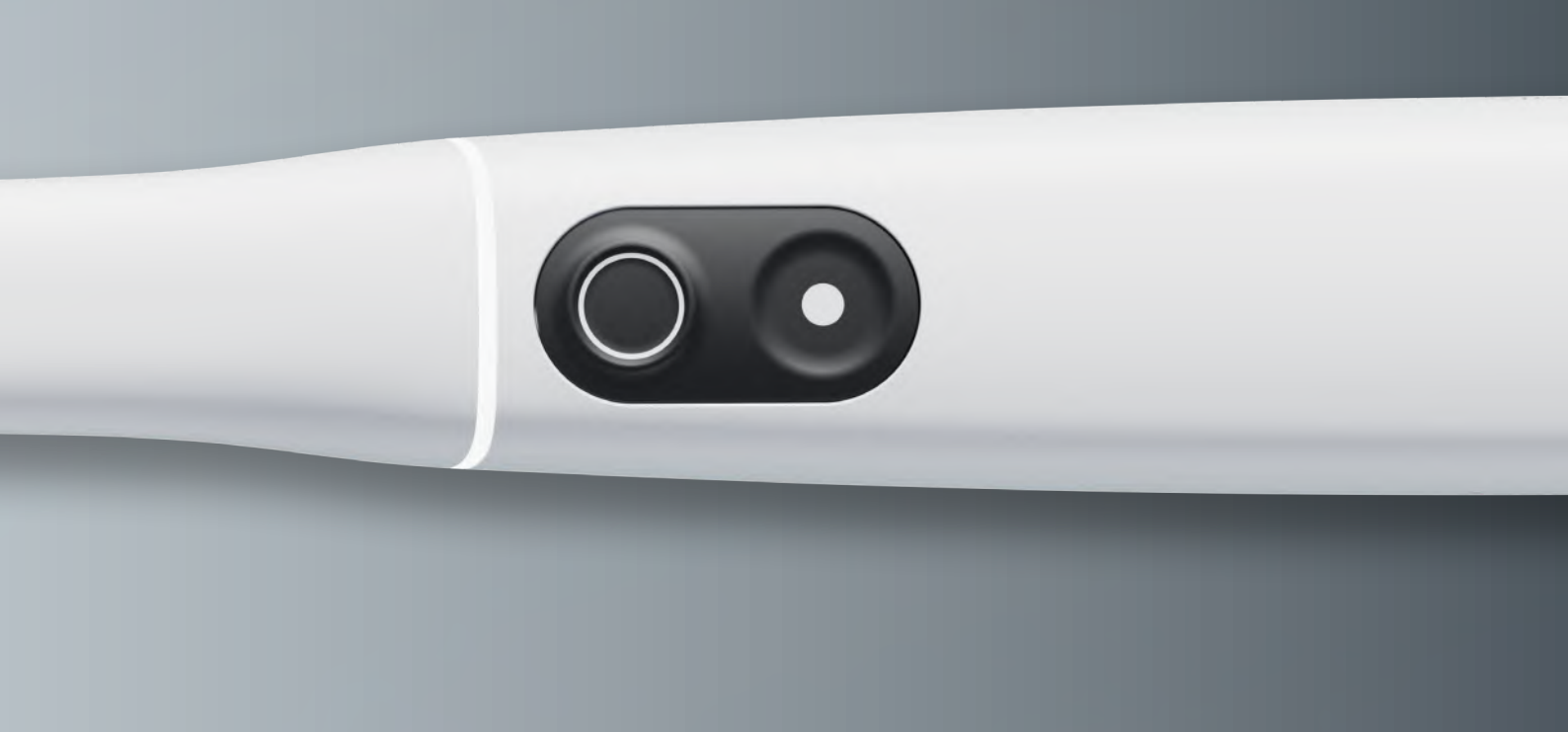


TRIOS 5 Wireless

Intelligent. The ultimate TRIOS.

Next-level ergonomics.
Effortless scan technology.
Hygienic by design.

Proven clinical accuracy	✓
Realistic color scans	✓
Automatic scan clean up	✓
Access to Unite ecosystem	✓
Print-ready model design	✓
Patient engagement apps	✓
MOVE+ compatibility	✓
Full-mobility wireless scanning	✓
TRIOS Share capability	✓
Preventative care with surface caries detection	✓
Enhanced tip features	Calibration-free scanning Option of TRIOS Ready Tip
Smart battery charging	✓
Energy-saving sleep mode	✓
ScanAssist intelligent-alignment technology	✓
Sensory feedback guides scanning	✓
Hygienic design	Sleeve and TRIOS Ready Tip



TRIOS 4 Wireless

Advanced. Extra potential.

2-in-1 wireless technology.
Detect wear and tear
Scan-ready in seconds.



2-in-1 SmartCord



Smart tip calibration counter
InstantHeat technology

TRIOS 3 Wired

Proven. An industry winner

Trusted technology.
Invisalign connected.
Improved experience



TRIOS Core Wired

Core. Essential functionality.

Core scan technology
Built for send-to-lab



Welcome TRIOS Core!



Award-winning TRIOS technology distilled down to its most essential and affordable form. That's **TRIOS Core**. Accurate, fast and easy, for a great send-to-lab experience.

No compromises



**TRIOS
CORE**

Choose the Medit Intraoral Scanner that best suits the needs of your practice.

With four variations to choose from, Medit offers a solution for every practice.

Medit i600

Scan with confidence using the smart and versatile Medit i600. Smart scanning with ease of use for any procedure, consistently offering accurate and cost-effective results.

Medit i700

Lightweight ergonomic scanning that's comfortable in the hand, easy to handle and built to last. Experience high-speeds and precise results without sacrificing accuracy when you choose the Medit i700.

Medit i700 wireless

Discover the freedom of seamless wireless scanning and experience the magic Medit i700 brings to your practice. Elegantly compact and designed to perform.

Medit i900

ALL IN on your scanning experience. Medit's premium scanner that redefines the scanning experience. Meticulously crafted, engineered for excellence, and dedicated to bringing seamless efficiency to every user.



MEDIT

Starting from \$16,000

Includes laptop, freight, installation,
onsite training & 1-year warranty

Seeking to create added value in your practice? It's time to try 3D printing!

With an ever expanding scope, 3D Printing enables fast, efficient and boundless opportunities to grow the scope of your offering. Contact us today to find out more about printing your own in-house splints, surgical guides, crowns, study models and more!



Built to outperform.

The MAX 2

NEW

A simple user interface

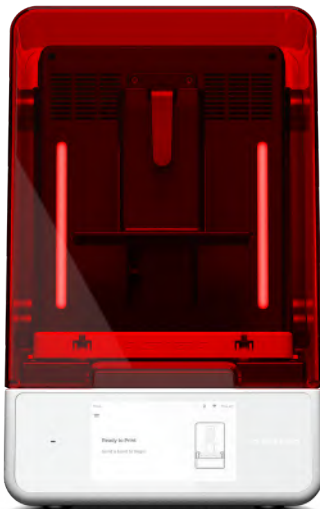
The UI on the Max 2 will walk you through the process of starting the printer with simple messaging and clear infographics.

Transparent Mode™

Printing clear materials has never been this accurate.

Chamber heating

Take advantage of a chamber heating system to warm your temperature sensitive materials ready for printing.



Predictable, reliable, smart.

The Ultra



Touchless Entry

Interact with your 3D printer without contaminating surfaces or double handling.

Magnetic Platform Holder

Streamline your workflow and be automation ready with the new magnetic build-platform holder. No latches, screws or calibration is necessary.

Infrared Material Heater

Access a new generation of advanced materials with the infrared material heating system, achieve temperatures up to 70°C.

Build Volume 192 x 108 x 147mm

Pixel Size 50µm

ASIGA

Receive an extra tray and resin with every printer purchased.



NEW

Basic Package includes

- Form 4B 3D Printer
- Form 4 Resin Tank
- Form 4 Build Platform
- Form 4 Finish Kit & Mixer

FROM \$10,200



Complete Package includes

- Form 4B 3D Printer,
- Form 4 Resin Tank
- Form 4 Build Platform
- Form 4 Finish Kit
- Mixer
- Form Wash 2nd Gen
- Form Cure

FROM \$13,020

formlabs 

Introducing the Form 4B

Blazing Speed Meets Unmatched Accuracy. With unprecedented speeds, print a dental model every 49 seconds. Print dental parts with industry-leading surface accuracy of over 95% of data points within 50µm of the original CAD data, consistent across the build platform.



E4 Mill and TRIOS 3 Scan Package

Start today from \$447 pw*

* Monthly pricing excludes annual subs and maintenance fees.

Includes

- Trios 3 Wireless Scanner
- HP Z Book Laptop
- 3Shape Design Studio
- VHF E4 with Wet Milling
- Aidite Cameo Porcelain Furnace
- BONUS 50x Aidite Lithium Disilicate Blocks



Z4 Mill and TRIOS 5 Scan Package

Start today from \$619 pw*

* Monthly pricing excludes annual subs and maintenance fees.

Includes

- Trios 5 Scanner
- Dell Precision Laptop
- 3Shape Design Studio
- VHF Z4 Wet Mill
- Aidite Cameo Porcelain Furnace
- BONUS 50x Aidite Lithium Disilicate Blocks



E4

For easy entry into same-day dentistry.

Impress your patients with a quick and comfortable treatment and produce perfect restorations – easily and in just one session. Your patients won't thank you enough.

- No compressed air required with AIRTOOL technology
- Plug and Mill! Can be combined with any scanner
- Wet and (optional) Dry processing of block materials
- Modular machine design to optimize servicing and maintenance



N4+

The wet milling powerhouse.

The N4+ is a wet processing machine for grinding glass ceramic, composite and zirconia blocks as well as titanium abutments. This machine combines the high precision and fast drives in an extremely compact housing.

- Mill up to 3 blocks with 45mm length at the same time
- PUREWATER: no grinding additives necessary, except for titanium processing
- Easy milling of implant screw channels – saves costs on pre-drilled blocks
- Automatic changer for 8 tools



Z4

Same-day dentistry. Unparalleled perfection.

The Z4 is a wet processing machine for grinding glass ceramic, composite and zirconia blocks as well as titanium abutments. This machine combines the high precision and fast drives in an extremely compact housing.

- Restorations in under 10 minutes
- Wet grinding of glass ceramic, composite and zirconia blocks as well as titanium abutments
- Integrated CAM PC with touchscreen and Wi-Fi module
- Built-in compressed air - no compressor needed



Unleash precision
in dentistry with our
exclusive dental
milling demo.



Calling all Dentists!

Elevate your practice to new heights of precision and efficiency with an in-house Dental Milling demo. Experience the seamless integration of cutting-edge technology as you craft a flawless crown case from start to finish.

Step 1: Prep and Scan your patient

Book, prep and scan your patient for a posterior crown case following the prep guidelines provided.

Step 2: Crown Design Collaboration

Join forces with our expert CAD/CAM team to design the perfect crown. Explore customisation options, ensure the perfect fit, and witness your vision come to life on the screen.

Step 3: State-of-the-Art Milling

Experience the power of precision with our VHF milling machines, using GC Lisi blocks for unparalleled results. Watch as your design is transformed into a tangible, high-quality crown, ready to enhance your patient's dental experience.

Step 4: Polish

Your Territory Manager and the GC team take over to demonstrate the art of polishing. Learn essential tips and tricks for achieving a flawless finish, ensuring patient satisfaction and lasting aesthetics.

Step 5: Place your Crown

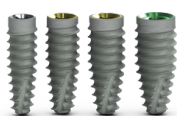
Our team will be on-site to assist, offering valuable cementation insights and support as you place the crown with confidence.



Scan the QR code to reserve your spot for a Dental Milling Demo today and revolutionise your approach to crown cases.



IMPLANTOLOGY DIGITAL SOLUTIONS



x25

BioHorizons Implants



x1

BioHorizons Guided
Surgical Kit



x1

Asiga Max 2
AG-MAXUV2



x1

CLEANI Washer Unit
AC-KT200180101



x1

CURIE UV Curing Unit
AC-KT200200101



x2

Keystone Keyguide 1kg
KI-4220001



1

\$32,850.00 ex GST / **\$41,033.00**



x30

BioHorizons
Implants

x1

BioHorizons Guided
Surgical Kit

x1

3Shape Implant
Studio Software with
Dell Precision Laptop

x1

Trios 3 Wired Pod x Pen
351-22001091

x1

Asiga Max 2
AG-MAXUV2

x1

CLEANI Washer
Unit
AC-KT200180101

x1

CURIE UV Curing Unit
AC-KT200200101

x2

Keystone Keyguide 1kg
KI-4220001



MAX

\$76,000.00 ex GST / **\$89,849.00**

For more information please contact:

Kim Austin | 021 712 758

Andrea Harrison | 021 990 905

Implant exchange permitted 12 months from purchase date

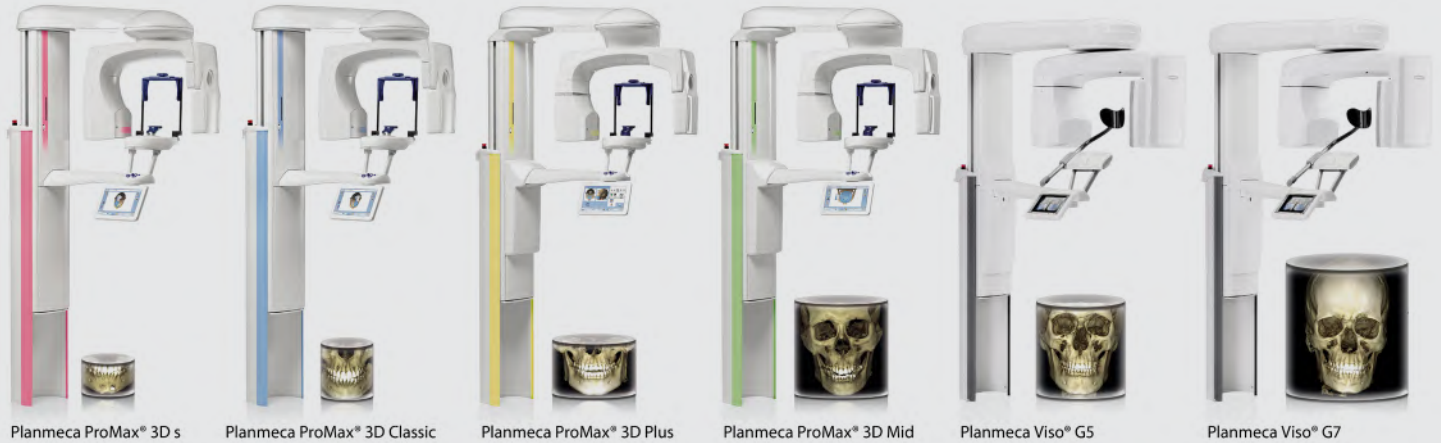
HENRY SCHEIN® BIOHORIZONS®

Planmeca 3D Imaging from \$79,900

PLANMECA

All Planmeca Promax 3D Units come equipped with:

SmartPan System, Ultra Low Dose Technology, ProMax Extended FOV, Planmeca CALM. (Romexis Software Add-ons optional)



Morita Veraview X800 Superior Japanese technology from \$95,000


MORITA

The 2D/3D X-ray Veraview X800 provides superior diagnostics for dentists and safety for patients. The incredible attention to detail, ground-breaking resolution of more than 2.5 LP/mm MTF and a voxel size of 80 µm are reflected not only in the image quality but also in the range of features.

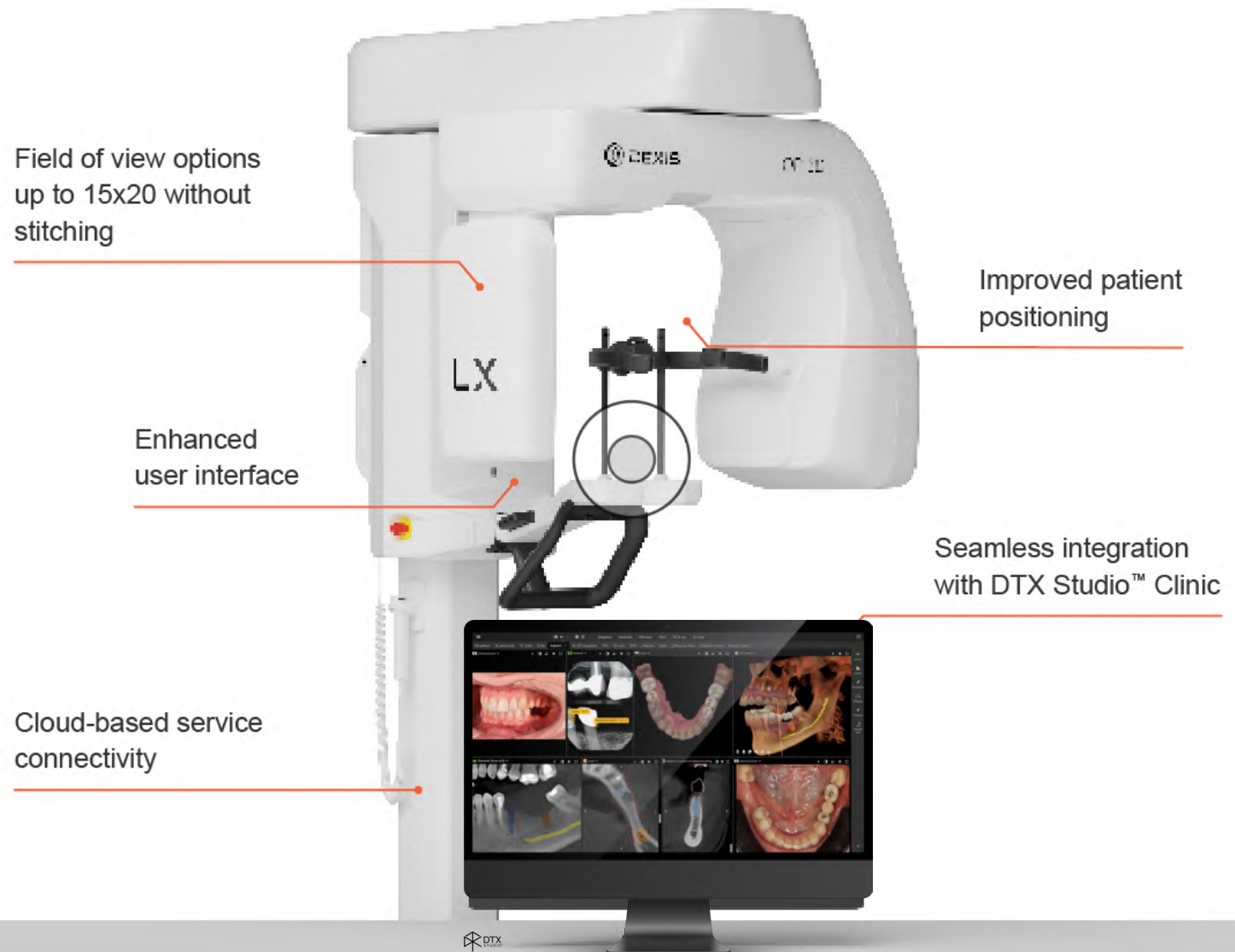


Imaging Innovation Expanded.

Discover the possibilities with OP 3D LX.

Introducing DTX Studio™ Clinic

From image acquisition to diagnostics and treatment planning, DTX Studio Clinic brings all your 2D, 3D, intraoral scans and photography into one award-winning platform powered by assisted intelligence. AI helps do the work so you can focus on delivering better patient care.



DEXIS 3D imaging starting from \$77,000

* Advertised price is for the OP 3D – Pan and 3D (FOV 5x5, 6x9, 9x11)

Henry Schein Technical Support Services

What you can expect from us

Installation

Our experienced team will assess the installation site for readiness. This includes addressing site access, facilities preparation, and IT requirements. We can provide you with all the necessary information to prepare for an installation and our team will ensure your equipment is installed to the manufacturer standard.

Local Support

Henry Schein partners with a network of trusted service agents to be on-site when you need them. Our skilled team of specialist, in-house support technicians provide remote software support and training for an immediate response. On-site training services are also available, both at the time of installation and when you need refresher training or have new staff on-board.

Manufacturer Warranties

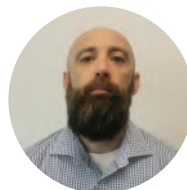
Our products are all backed by a manufacturer warranty to cover you if a product fails to perform due to a component failure or manufacturing issue. We follow careful installation protocols to make sure the conditions for good performance are met.



Christo Kovachev
Senior Technician Digital Imaging,
CAD/CAM, Software Integration and Support



Dustin Jacobsohn
Senior Technician Digital Imaging,
CAD/CAM, Software Integration and Support



Dom Caomanach
Specialist Technician - Digital Prosthetics



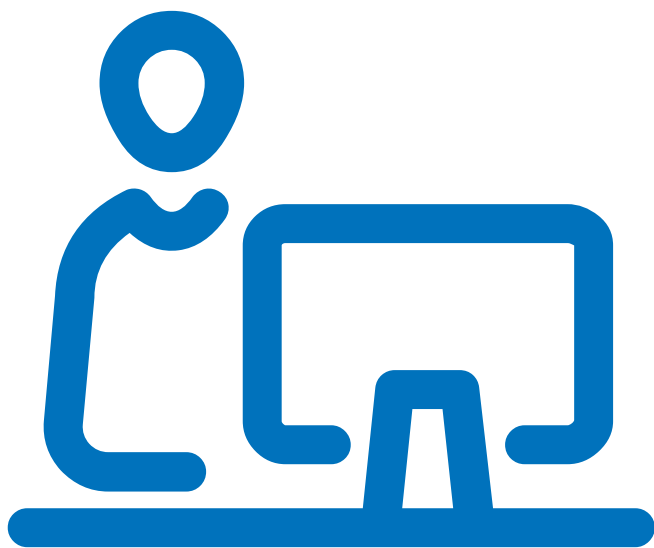
Sean Corcoran
Aftersales Support Technician



James Goodman
Equipment Service Team Leader



Rene Navarro
Equipment Service Technical Specialist



0800 808 855