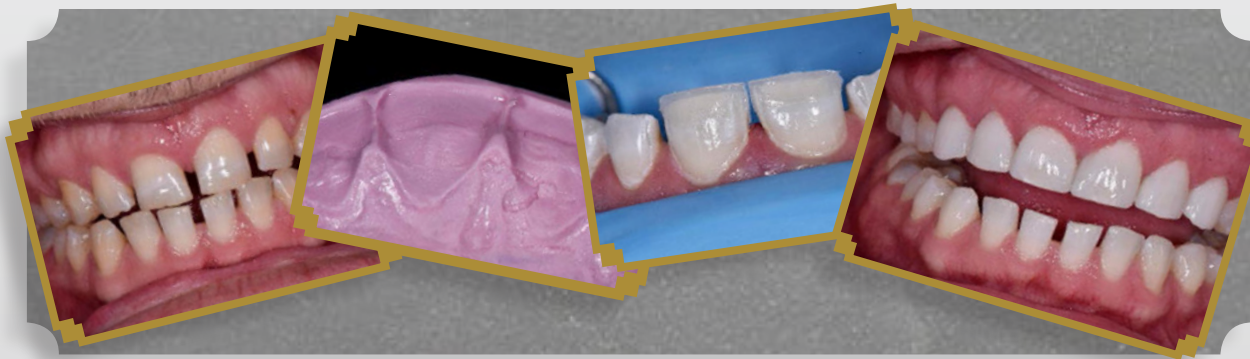


Skulpting Skool 102: The guide to Ultimate Esthetics in Class IV & Composite Veneer Situations using GC Essentia

The guide to Ultimate Esthetics in Class IV & Composite Veneers, using GC Gaenial Anterior & Essentia

- Hands-on Workshop – Date – Saturday 7th November 2020, 8.30am – 5.00pm
- Location – Henry Schein Showroom, 23 William Pickering Drive, Albany, Auckland
- Registration fees - \$695.00 + GST (early bird registrations, prior to 10th October \$595.00 + GST)



Sponsored by:



HENRY SCHEIN®

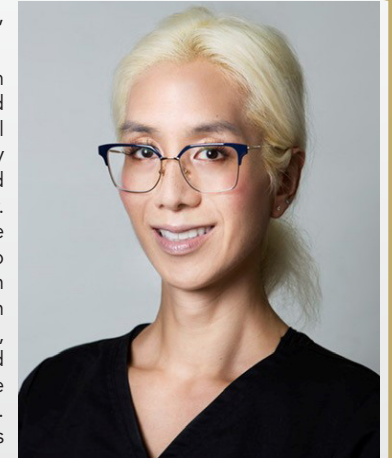


To Register please visit:
<https://www.dentevents.com/new-zealand/skulpting-skool-102/e10015850>



MEET CLARENCE TAM, HBSC, DDS, AAACD, FIADFE

Dr. Clarence Tam is originally from Toronto, Canada, where she completed her Doctor of Dental Surgery and General Practice Residency in Pediatric Dentistry at the University of Western Ontario and the University of Toronto, respectively. Clarence's practice has a focus on restorative and cosmetic dentistry, and she strives to provide consistently exceptional care with each patient. She is well-published in both the local and international dental press, writing articles, reviewing submissions, and developing prototype products and techniques in clinical dentistry. She frequently and continually lectures internationally.



Clarence has multi-faceted dentistry experience that extends across multiple tiers of leadership. She is the immediate past Chairperson and Director of the New Zealand Academy of Cosmetic Dentistry. She is one of merely two dentists in Australasia who are Board-Certified Accredited Members of the American Academy of Cosmetic Dentistry (AACD). Moreover, Clarence maintains Fellowship status with the International Academy for DentoFacial Esthetics. She sits on the Advisory Board for Dental Asia, and is part of the Restorative Advisory Panel for Henry Schein Dental New Zealand. Aside from the professional organizations she belongs to, Clarence is a Key Opinion leader for an array of global dental companies, including Triodent, Coltene, Kuraray Noritake, Hu-Friedy, J Morita Corp, Henry Schein, Ivoclar Vivadent, Kerr, GC Australasia, SDI, and DentsplySirona. Moreover, she is the sole Voco Fellow in New Zealand and Australia.

Clarence participates in a number of charitable endeavors and takes great pride in achieving beautiful smiles for patients in and around her community. She sits on the board of Smiles For the Pacific, an educational trust and charity that aims to expand professional dentistry services across the entire South Pacific region. She is involved with Delta Gamma Sorority and aims to spearhead projects harmonious with Service for Sight in the South Pacific

