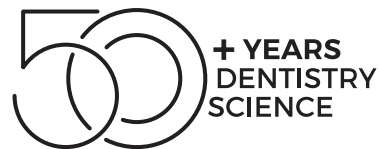




# HIGHLIGHTS

July | Aug | Sept 2025

NEW ZEALAND



## TOOTH WHITENING

Call Courtney Gerlach: 021 400 323

### TAKE-HOME WHITENING

**4+1<sup>×</sup>**  
BUY 4, GET 1 FREE

**10+4<sup>×</sup>**  
BUY 10, GET 4 FREE

POLA DAY, POLA NIGHT, POLA FOR ALIGNERS, POLA LUMINATE, POLA LIGHT



#### POLA DAY

HYDROGEN PEROXIDE BASED ADVANCED TRAY TOOTH WHITENING SYSTEM

- Available in **7.5%** and **9.5% hydrogen peroxide**
- High water content
- From 30 minutes once a day
- Contains fluoride
- Neutral pH and desensitising additives

4 X 1.3g MINI KIT  
10 X 1.3g SYRINGE KIT  
50 X 3g DISPENSER PACK



#### POLA NIGHT

CARBAMIDE PEROXIDE BASED ADVANCED TRAY TOOTH WHITENING SYSTEM

- Available in **10%, 16% and 22% carbamide peroxide**
- High water content
- From 45 minutes once a day
- Contains fluoride
- Neutral pH and desensitising additives

4 X 1.3g MINI KIT  
10 X 1.3g SYRINGE KIT  
50 X 3g DISPENSER PACK



#### POLA DAY CP

SUPER FAST TRAY TOOTH WHITENING SYSTEM!

- Available in **35% carbamide peroxide**
- From just 15 minutes per day tray wear time
- Desensitising additives
- High water content

4 X 1.3g MINI KIT  
10 X 1.3g SYRINGE KIT  
50 X 3g DISPENSER PACK



#### POLA LUMINATE

BRUSH ON & GO!

- No trays required - quick and easy professional brush on tooth whitener
- 6% hydrogen peroxide** low viscosity fast drying gel

POLA LUMINATE



#### POLA FOR ALIGNERS

STRAIGHTEN AND BRIGHTEN TOGETHER

- Available in **10% carbamide peroxide**
- High viscosity gel ensures it can be easily and securely placed into the aligner tray, staying in place

POLA FOR ALIGNERS 4 X 3g

#### POLA LIGHT

ADVANCED TOOTH WHITENING SYSTEM

- Available in **6% hydrogen peroxide**
- No custom trays required
- Reduced patient consult time
- Entry level whitening option
- Great front desk conversation starter

POLA LIGHT 4 X 3g SYRINGES



BUY 8, GET 2 FREE<sup>×</sup>

**PLUS BONUS**  
POLA LIGHT  
DISPLAY STAND



## IN-OFFICE WHITENING

**3+1<sup>x</sup>**  
BUY 3, GET 1 FREE

### POLA RAPID

Pola Rapid is an in office whitening treatment that safely whitens teeth in a 24 minute application time.

#### SUPERIOR HANDLING AND FAST REMOVAL

Pola Rapid's higher viscosity gel enables faster application and removal due to its specially formulated non-stick attributes.

Pola Rapid can be extruded quickly and easily and remains on teeth when applied.

#### ENHANCED BLUE GEL FOR FASTER APPLICATION

Pola Rapid uses an advanced blue gel for ease of visibility and application. The easy to apply non-stick gel enables faster application and removal.

#### MINIMAL CHAIR TIME WITH IMMEDIATE RESULTS

A unique **38% hydrogen peroxide** formulation that releases active ingredients immediately. In only one visit, Pola Rapid initiates a powerful whitening treatment designed to whiten teeth in 24 minutes. No pre-desensitiser step is required.

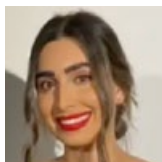


SUPER. FAST.  
WHITENING.

POLA RAPID 3 PATIENT KIT  
POLA RAPID 3 PATIENT KIT WITH OPTRAGATE  
POLA RAPID 1 PATIENT KIT  
POLA RAPID 1 PATIENT KIT WITH OPTRAGATE



## CASE STUDIES



Dr Chanel Beydoun  
Australia



BEFORE



AFTER



Dr Bob Gibbons  
Australia





# STELA

## THE FUTURE OF COMPOSITES

50 years of dental material experience has engineered a two step restorative that is stronger, gap free, easier to place and perfectly cures every time.

- ✓ Unlimited depth of cure (self cure)
- ✓ Gap-free interface
- ✓ Only 2 steps: 15 sec prep
- ✓ High strength
- ✓ Choose: capsule or automix

STELA AUTOMIX 1 SYR REFILL  
STELA AUTOMIX INTRO KIT  
STELA CAPSULE REFILL 50 CAP  
STELA CAPSULES INTRO KIT  
STELA PRIMER REFILL 5ML BT



**BPA &  
HEMA  
FREE**

BUY 1 INTRO KIT  
GET 1 REFILL KIT  
**FREE\***

CAPSULE INTRO KIT	8640004
AUTOMIX INTRO KIT	8640002
CAPSULE REFILL KIT	8640003
AUTOMIX REFILL	8640001



CHOICE OF CAPSULE OR SYRINGE KITS



BPA  
FREE

HEMA  
FREE

## SUPERIOR STRENGTH & AESTHETICS

### LUNA 2

UNIVERSAL COMPOSITE

- Improved non-stick, non-slump handling and reliable mechanical properties
- Logical Shade Matching Technology for easier and accurate shade selection
- BPA free
- Very high radiopacity of 250% AI
- Flexural strength similar to dentine for Class III, IV and V restorations and proximal boxes
- Opalescent and fluorescent like the tooth for lifelike results

LUNA 2 4g SYRINGE  
LUNA 2 20 X 0.25g COMPLETS  
LUNA 2 INTRO KIT



BEFORE



AFTER

Photos courtesy:  
Dr Neus Sancho Lecina - SPAIN



Scan  
QR code  
for more  
information



LUNA 2 &  
LUNA FLOW

4+1<sup>\*</sup> BUY 4,  
GET 1 FREE

10+4<sup>\*</sup> BUY 10,  
GET 4 FREE



HEMA  
FREE



## PERFECT FLOW PERFECT STAY

### LUNA FLOW

UNIVERSAL FLOWABLE COMPOSITE

- Exceptionally high compressive strength of 421 MPa and 128 MPa of flexural strength
- Flows on demand, holds its shape and does not string for maximum control over application
- Outstanding radiopacity of 265% AI for faster and more precise diagnosis
- Logical Shade Matching Technology for easier and accurate shade selection
- Two viscosity options for all clinical indications: Luna Flow offers medium/high viscosity and Luna Flow LV offers low viscosity

LUNA FLOW/LV 2G SYRINGE  
LUNA FLOW/LV BULK KIT 5 X 2G SYRINGES  
LUNA FLOW/LV INTRO KIT 4 X 2G SYRINGES



BEFORE

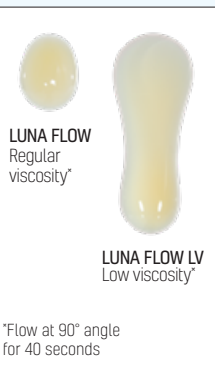


AFTER

Photos courtesy:  
Dr Carla Cohn - CANADA



Scan  
QR code  
for more  
information





# RADII XPERT

## 20% DISCOUNT

RRP \$3023.00

- Unique target assist for precision curing
- Optimally collimated beam
- Consistent light intensity over clinically relevant distances
- Smart technology that includes a LCD display, adjustable timer with countdown and the ability to save your favorite curing setting
- Ergonomically well-balanced grip
- Cures all composites - light intensity 1500 mW/cm<sup>2</sup> over a 4-mm aperture with wavelength range of 440 nm - 480 nm
- Consistent beam profile



TARGET ASSIST  
PRECISION CURING



COLLIMATED  
LIGHT



SMART  
TECHNOLOGY FOR  
EASE OF USE



ERGONOMICALLY  
WELL-BALANCED  
GRIP

SMARTER DESIGN.  
OPTIMAL CURE  
EVERY TIME.

360°  
ROTATABLE HEAD

185G  
LIGHT WEIGHT

2.5 HOUR  
RUNTIME

SAVE  
\$604.60\*



# ULTRAMAT 2

## 20% DISCOUNT

RRP \$1867.00

HIGH SPEED MULTI-USE TRITURATOR

- Low vibration and extremely quiet
- Accurate and consistent trituration
- For mixing most encapsulated dental materials
- Safe and simple to use

HIGH SPEED,  
MULTI-USE  
TRITURATOR

SAVE  
\$374.40\*

5 YEAR  
LIMITED  
WARRANTY



# ADHESIVES

## ZIPBOND

### THE ALL-IN-ONE ADHESIVE SOLUTION FOR EVERY SITUATION

- Consistent bond strengths to dentine and enamel
- Wet and dry dentine bonding
- Proprietary combination of adhesive monomers including MDP
- Predictable bond strengths to indirect substrates
- Effective hybridisation
- Exceptional control
- Highly aesthetic
- Pleasant aroma
- Fluoride releasing
- Easy to follow application
- Convenient delivery

ZIPBOND REFILL 5mL BOTTLE

DISCOUNTED PRICE  
**\$115.00**



29 CLINICAL EVALUATORS

862 TOTAL USES

93% CLINICAL RATING

- Dental Advisor rates Zipbond ++++ ½ or **93% clinical rating**
- 862 uses and **zero post op sensitivity**
- 97% of Dental Advisor evaluators rated it either equal or better than their existing adhesive
- **100% would recommend Zipbond** to a colleague

DEFENCE  
AGAINST  
CLINICAL  
VARIABILITY

## ETCHANT

### CONSEAL F

LIGHT CURED FLUORIDE RELEASING RESIN PIT AND FISSURE SEALANT

- High fluoride releasing
- BPA & HEMA free
- Accurate and controlled delivery with an ultrafine tip
- Extremely low viscosity - quickly and deeply penetrate small pits and tight fissures
- Opaque white shade
- 5mL bottle and 1g syringes

CONSEAL F 5ML  
CONSEAL F INTRO KIT  
CONSEAL F BULK SYRINGE KIT  
CONSEAL F BOTTLE KIT



BUY 3, **GET 1 FREE**

**HENRY SCHEIN®**  
DENTAL

**Rely on Us™**

free phone 0800 808 855  
orders@henryschein.co.nz  
www.henryschein.co.nz

\*All prices exclude GST. Offers cannot be combined. Valid on invoices dated July 1st - September 30th 2025. All claims for free goods must be made within 30 days from the end of promotion date. The above-mentioned offers are not applicable on corporate, government accounts or those customers who have received discounted pricing. Bonus goods must be of equal or lesser value. Offers are valid in New Zealand only.

Courtney Gerlach  
Sales Product Specialist -  
New Zealand  
SDI Limited  
m: +64 21 400 323  
e: Courtney.Gerlach@sdi.com.au

**SDI**

YOUR  
SMILE.  
OUR  
VISION.