



# MID WINTER MANIA

## CHECK OUT OUR COOL OFFERS!

Take advantage of the new Investment Boost incentive - you can now deduct 20% of the value of your new dental equipment from your annual taxable income, on top of normal depreciation. It's the perfect time to upgrade your equipment and technology!

Treatment Units  
from  
\$27,600

OPG Units  
from  
\$28,900

Chairside Milling  
from  
\$39,750

# Meet the team

Bringing you the broadest range of dental equipment brands in the New Zealand market, our team have access to the most state-of-the-art products and cutting-edge technology, with an option to suit every practice and budget.

We understand that every dental practice has unique needs, and our team are here to work closely with you to find the perfect set up that aligns with your space, style, and aspirations for patient experience.

With our extensive range and expert guidance, **our team have 89 years of dental industry experience between them**, you can trust that you're investing in top-quality, reliable equipment that comes hand in hand with an expert support network.

We're confident that our team stands out as some of the most knowledgeable in the industry. Combining decades of experience, continuous education, and a passion for innovation we're equipped to provide the most comprehensive guidance and solutions available.



**Bruce Fowler**  
NZ Equipment Manager

bruce.fowler@henryschein.co.nz  
021 190 1371

Years working  
at Henry Schein  
20 years

Dental industry  
experience  
26 years

Special areas of interest  
The relationships with our  
suppliers and customers  
that are the essence of  
what we do.

Favourite part of my role  
Being part of the chain that delivers care to people all over the country -  
there's not many roles with that kind of reach. I also enjoy the relationships  
in our business and the stimulation of ever-changing technology.



**Daniel Els**  
Equipment Specialist Northland, Auckland and Waikato

daniel.els@henryschein.co.nz  
021 750 609

Years working  
at Henry Schein  
8 years

Dental industry  
experience  
29 years

Special areas of interest  
Digital Imaging

Favourite part of my role  
Helping customers improve workflow and outcomes for patients  
with the latest technology.



**Edward Harrison**  
Equipment Specialist Auckland CBD, Wellington and Government

edward.harrison@henryschein.co.nz  
021 769 069

Years working  
at Henry Schein  
11 years

Dental industry  
experience  
11 years

Special areas of interest  
3D imaging and New  
Surgery Set-ups

Favourite part of my role  
Finding a solution that exceeds the customers' expectations.



**Paul MacDougall**  
Equipment Specialist Central North Island

paul.macdougall@henryschein.co.nz  
022 342 4900

Years working  
at Henry Schein  
14 years

Dental industry  
experience  
14 years

Special areas of interest  
Sterilisation and  
Treatment Units

Favourite part of my role  
Getting the opportunity to be the 'Go-to-Guy' for surgery layout, design and  
technical questions. Seeing projects go from concept to completion for our clients.



**Michael Findlay**  
Equipment Specialist South Island

michael.findlay@henryschein.co.nz  
022 016 5898

Years working  
at Henry Schein  
9 years

Dental industry  
experience  
9 years

Special areas of interest  
CAD/CAM and 3D CBCT

Favourite part of my role  
I take great pleasure in leading trainings on Digital Imaging and CAD/CAM  
technology. It's immensely gratifying to see how these advancements have  
not only streamlined workflows but also significantly improved the overall  
efficiency and quality of care within the practice.

Morita  
**Signo T100**

From  
**\$27,900**

## What makes the T100 design philosophy unique?



Pantograph Lift Mechanism



Intuitive Foot Controller



30,000-lux Luna Vue TS



Ease of use Headrest



Dual Balanced Swing Arm



Central Axis Table



The T100 is a well-balanced option for dental professionals who seek both quality and efficiency in their equipment while prioritising patient comfort and ease of use. Its thoughtful design and intuitive functionality make it an ideal choice for many clinics looking to enhance their daily operations without breaking the bank.

**PLUS**, every treatment unit purchased receives a free Durr Infection Prevention Starter Kit (VALUED AT \$450)





# LAST CALL - The KaVo 1058 Life Life will be jetting off to retirement this year!\*

**KAVO**  
Dental Excellence

## KaVo 1058 Life

**SAVE \$7,000**

From  
**\$36,500\*\***

Take advantage of this excellent value for money treatment unit and join thousands of dentists throughout the world who report that their 1058 Life “runs and runs and keeps on running”

**PLUS**, every treatment unit purchased receives a free Durr Infection Prevention Starter Kit (VALUED AT \$450)



\* 7 x Table and 1 x Swing Arm units available only WHILE STOCK LASTS.

\*\*Excludes upholstery – speak to us about upholstery options

## KaVo Estetica E30

**SAVE \$3,500**

From  
**\$27,600\*\***

Discover the essence of Dental Excellence at an affordable entry-level price point: the KaVo ESTETICA E30 combines convenience with efficiency as part of your daily workload.

**PLUS**, every treatment unit purchased receives a free Durr Infection Prevention Starter Kit (VALUED AT \$450)



\*\*Excludes upholstery – speak to us about upholstery options

# Limited Offer while Stocks Last!\*



A-dec  
**300 PRO**

**SAVE 20%**



The A-dec 311B dental chair features a robust build, excellent access, and minimal maintenance in a compact design. Combined with the A-dec 300 Pro delivery system, you'll have just what you need for the way you practice today. With more possibilities for tomorrow.

## CP5 Control Panel

The A-dec 300 Pro brings you a better operator experience with the Control Pad 5 (CP5) and Control Pad 5i (CP5i)—both with ultrasonic scaler integration. Enjoy seamless transitions during treatment with access to your chair, handpieces, clinical devices, cuspidor, and light functions all on one control pad. Navigate easily and accurately with just the touch of a finger on the smooth, impact-resistant glass surface.



**PLUS**, every treatment unit purchased receives a free Durr Infection Prevention Starter Kit (VALUED AT \$450)



\* While stock lasts - only 6 available at 20% off price.

Limited upholstery colours available at this price.

# A-dec Stool Clearance Huge Savings



## A-dec 422 Assistant Stool

**SAVE \$895**

\$1,300\* \$2,195



## A-dec 421 Doctors Stool Short

**SAVE \$945**

\$1,000\* \$1,945



## A-dec 421 Doctors Stool Tall

**SAVE \$685**

\$1,260\* \$1,945



### 421 Doctors Stool Upholstery

Upholstery Set Formed Black  
Upholstery Set Formed Sapphire  
Upholstery Set Formed Sky Blue  
Upholstery Set Formed Amethyst  
Upholstery Set Formed Hazelnut  
Upholstery Set Formed Indigo  
Upholstery Set Sewn Pacific  
Upholstery Set Sewn Ebony  
Upholstery Set Sewn Diplomat Blue  
Upholstery Set Sewn Riviera

### 422 Assistant Stool Upholstery

Upholstery Set Formed Black  
Upholstery Set Formed Sapphire  
Upholstery Set Formed Amethyst  
Upholstery Set Formed Indigo  
Upholstery Set Sewn Pacific  
Upholstery Set Sewn Ebony  
Upholstery Set Sewn Diplomat Blue  
Upholstery Set Sewn Riviera

\* Prices available with stock upholstery colours listed above only – while stocks last.

# Over 120 Planmeca ProOne in use throughout New Zealand.

**PLANMECA**



Planmeca  
**ProOne**

**SAVE \$7,500**

From  
**\$28,900\***

Excludes software

The ProOne is Planmeca's full-featured panoramic imaging unit, designed with simplicity in mind while featuring several cutting-edge innovations.

## **Easy Patient Positioning**

Monitor patients from the front and the side, with positioning further assisted by a triple laser beam system that indicates the correct anatomical positioning points.

## **Guided User Interface**

Full-colour graphical user interface that helps guide you through procedures with clear texts and symbols.

## **Autofocus**

This feature automatically positions the focal layer using a low dose scout image of your patient's central incisors as well as landmarks in the patient's anatomy to calculate placement **resulting in perfect panoramics every time.**



# Promax 3D Classic with Ceph Arm Clearance

**only \$91,500\***

**PLANMECA**



Planmeca  
**Promax 3D Classic**

**Packed with features so you're ready to reap the benefits of this new technology right away.**

The Planmeca ProMax 3D Classic covers the entire dentition, making it an excellent option for full arch 3D dental imaging needs. Moving patients can be a significant challenge to image quality, but the Planmeca CALM movement correction algorithm helps to efficiently remove movement artifacts ensuring a successful image every time...eliminating the need for unnecessary exposure.

**Planmeca Promax 3D Classic units come equipped with:**

- Ultra Low Dose Technology
- Bitewing Panoramic Program
- Promax Extended Field of View
- Planmeca CALM Artifact Correction
- 2 x Romexis Standard 3D User License
- 1 x Romexis 3D Implant License

**Promax 3D Classic excluding ceph arm from only \$88,000** PB-FE001376

While stocks last - only 2 cephalometric units available at clearance price. PB-FE001376S

# NEW OP 3D EX from \$79,900



## Dexis OP 3D EX

Built on the OP 3D family technology, the ORTHOPANTOMOGRAPH™ OP 3D™ EX is a complete x-ray platform designed for general practitioners looking to expand their practice with 3D imaging.

The OP 3D EX makes it easy to capture high-quality images with fast scan times while providing user-friendly features throughout the entire dental imaging workflow. Analyse clear, accurate 3D scans and diagnose with confidence thanks to the flexible field of view sizes and advanced filters, both in the device as well as within DTX Studio™ Clinic.

From image acquisition to diagnostics and treatment planning, DTX Studio Clinic brings all your 2D, 3D, intraoral scans and photography into one award-winning platform powered by assisted intelligence. AI helps do the work so you can focus on delivering better patient care.



# Superior Japanese Technology



## Morita Veraview X800 Japanese 3D Imaging

From  
\$95,000

- Reduced doses
- Eleven fields of view
- Sharp panoramic images
- Face-to-face design
- Network integration
- Partial cephalometric images



3shape



When you upgrade to a revolutionary  
**TRIOS 6** together with AI assistive Dx  
Plus diagnostic software from your  
present 3Shape TRIOS

Your next TRIOS.  
Redefined.

You are all about the latest and greatest - so are we. That's why we just launched the TRIOS 6 intraoral scanner together and our AI assistive Dx Plus diagnostic software— an innovation in intraoral scanning and software that helps redefine your diagnostics of key oral health conditions, including surface and proximal caries<sup>1</sup>, plaque, tooth wear and gingival recession.

Moreover, TRIOS 6 delivers up to 110% higher scan resolution for our best-ever scan quality. Accurate, fast, ergonomic, hygienic and flawless!

Upgrade your existing TRIOS to the future of intraoral scanning. Save now on a revolutionary TRIOS 6.

Great patient care starts here.



**NEW**  
**AVAILABLE**  
**NOW!**

TRIOS 6 | Dx+

<sup>1</sup> Proximal caries will be available end of 2025 and are not detected by AI.

# Already mastered intraoral scanning and ready to add chairside milling to your practice?

Adding chairside milling is a smart investment that not only enhances efficiency but also patient satisfaction, as well as generating additional income for your practice. By including same-day restorations such as crowns, inlays, and veneers to your list of services you eliminate the need for multiple appointments and temporary restorations, saving both time and resources.

Implementing a full chairside system streamlines the workflow - it will reduce your reliance on external labs and allow you greater control over the quality and customisation of prosthetics.

**Impress your patients with a quick and comfortable treatment and produce perfect restorations – easily and in just one session. Your patients won't thank you enough.**

The VHF E4 is a perfect unit for an easy entry into chairside fabrication. It is a versatile, efficient and easy to use dental milling machine that simplifies same-day dentistry by offering both wet and dry milling capabilities without the need for compressed air.



## VHF E4 - Wet or Dry Milling

from only \$39,750  
(Includes Tool Set Starter Kit)



# Chairside production is so easy

The new E4 makes it so easy for you to get started with chairside production of dental restorations, and gives you maximum freedom. Combine the E4 with your preferred intraoral scanner, any CAD software and materials that are appropriate for your individual patients. The E4 is the heart of your workflow and produces the perfect restoration.

**The integrated CAM software enables you to get started right away!**

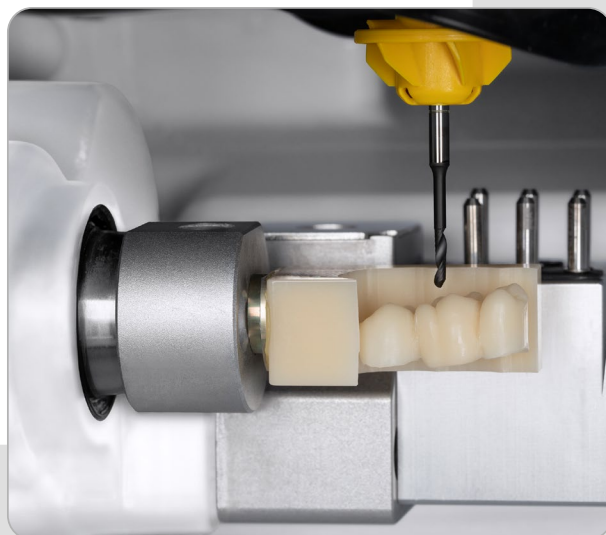


## The all-rounder for blocks

The E4 has many talents...

Wet grind glass ceramics or composites with ceramic content and dry mill materials such as zirconia and PMMA.

One great innovation of the E4 is that it does not use compressed air: The E4 requires neither an external compressed air connection nor an integrated compressor, which is only possible with VHF's new state-of-the-art patent-pending airtool.



## Cost-effective

- Sustainable operation with no compressed air
- The Purewater Technology ensures that no grinding additives are required for the cooling liquid
- The excellent price-performance ratio ensures a cost-effective entry into in-house production
- Extremely simple operation with provided Dentalcam software featuring directmill Technology – no license fees



## Independent

- Dentalcam software with open interface to CAD software and materials
- Virtually any intraoral scanner can be used
- Grinds and mills a full range of materials for glass ceramics, composites, zirconia and plastics



# Precision. Protection. Perfection.

## Sterile Solutions for Dentistry.

**SAVE \$1,240**



Coltene Scican  
**Statim 2000 G4**  
~~\$11,000~~ ~~\$12,240~~  
SCI-G4222314

**SAVE \$1,000**



Coltene Scican  
**Statim 6000B G4+**  
~~\$9,500~~ ~~\$10,500~~  
SCI-G4700009

**SAVE \$1,678**



Coltene Scican  
**Hydrim C61 WD G4**  
Only ~~\$12,500~~ ~~\$14,178~~

- Thermal disinfection at 93°C
- Active air drying with HEPA filter
- 6 full size cassette capacity
- Can turnover 120 instruments in 60 minutes, start-to-dry

SCI-C61WDD02

**SAVE \$5,936**

**BONUS**



Mocom Australia  
**Supreme 22L**

~~\$12,999~~ ~~\$18,640~~

+ FREE Barcode scanner & printer (Valued at \$1,740)

- Can perform 50 sterilisation cycles with only 5L of tap water. Utilises a built in demin and recirculation filter.
- A large 7 inch colour touch display with simplified navigation, on-screen maintenance and how to videos
- Coloured LED lights communicate cycle status

ST-M-BSUP22

\* Limited stock available

**SAVE \$1,500**

**INTRO OFFER**



Melag  
**VacuKlav 41 B + Evolution**  
~~\$20,380~~ ~~\$21,880~~

MG-ME10081

# Purchase your surgery setup equipment through Henry Schein and we will give you your initial consumables package **1/2 Price** + **Free Delivery** on your entire order\*

For more information, or to request a quote, please contact your Henry Schein Equipment Specialist.



**Edward Harrison**

edward.harrison@henryschein.co.nz

021 769 069



**Daniel Els**

daniel.els@henryschein.co.nz

021 750 609



**Michael Findlay**

michael.findlay@henryschein.co.nz

022 016 5898



**Paul MacDougall**

paul.macdougall@henryschein.co.nz

022 342 4900

\* T and C's Apply

## Henry Schein Technical Support Services

### What you can expect from us

#### Installation

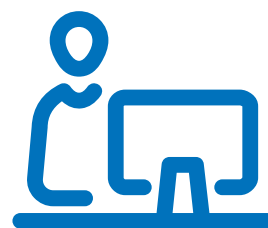
Our experienced team will assess the installation site for readiness. This includes addressing site access, facilities preparation, and IT requirements. We can provide you with all the necessary information to prepare for an installation and our team will ensure your equipment is installed to the manufacturer standard.

#### Local Support

Henry Schein partners with a network of trusted service agents to be on-site when you need them. Our skilled team of specialist, in-house support technicians provide remote software support and training for an immediate response. On-site training services are also available, both at the time of installation and when you need refresher training or have new staff on-board.

### Manufacturer Warranties

Our products are all backed by a manufacturer warranty to cover you if a product fails to perform due to a component failure or manufacturing issue. We follow careful installation protocols to make sure the conditions for good performance are met.



**0800 808 855**

# KaVo amiQA

Simply essential.

Visit the Henry Schein  
Stand at NZDA to test  
drive the NEW KaVo  
**amiQa!**



KaVo amiQa – 100% KaVo. Compact and ready for every indication. Everything you need in one unit that impresses with its quality and price/performance. The new KaVo makes the start into the future perfect.

**The new KaVo amiQa™.**  
Reliably at your side.

Find out more:  
[www.kavo.com/en/amiQa](http://www.kavo.com/en/amiQa)

Prices are effective from 14/7/2025 to 30/9/2025, or while stocks last where indicated, and exclude GST, freight, installation and software unless otherwise specified. Prices or offers in this publication are not applicable to Government or Corporate Accounts. Equipment configurations may differ from the images shown in this flyer. Surgery Set Up half price consumables terms and conditions apply as per Henry Schein Surgery Set Up Offer.

THE  
**ELEMENTS**  
OF EXCELLENCE

**KaVo**  
Dental Excellence