



## NEW YEAR, NEW EQUIPMENT LAST YEAR'S PRICES

Welcome in 2024 by treating your practice to some new equipment at 2023 prices.

**EVERY TREATMENT UNIT PURCHASED  
GIVES YOU THE OPPORTUNITY TO RECEIVE **50% OFF**  
YOUR CONSUMABLES AND SMALL EQUIPMENT\*  
ASK US HOW**



**BUY ANY TREATMENT UNIT,  
GET A Durr INFECTION PREVENTION KIT  
WORTH \$450 FREE**



\*Conditions Apply

## KAVO E30

Dental Excellence at attractive entry level pricing

**ONLY \$25,900**

STANDARD CONFIGURATION INCLUDES:

- Maia Operating Light
- Fibre Optic High Speed Tubing x 1
- KL701 Micromotor
- PIEZOsoft Ultrasonic Scaler
- Ambidextrous Operation
- Comfort Upholstery



## KAVO 1058 LIFE

Dependability day after day, year after year

**ONLY \$34,900**

STANDARD CONFIGURATION INCLUDES:

- 540LED Operating Light
- Fibre Optic High Speed Tubing and 465LED coupling
- Dentist 3F Syringe
- KL701 Micromotor
- PIEZOsoft Ultrasonic Scaler
- Comfort Upholstery



## KAVO UNIQA

In a league of its own

**ONLY \$59,000**

STOCK CONFIGURATION INCLUDES:

- 540LED Operating Light
- LUX Turbine Unit+465 LED Coupling
- Dentist and Assistant 3F Syringe
- USB Connectivity
- IntraLUX KL 703 Micromotor
- PiezoLED Ultrasonic Scaler
- Preparation KaVo CONNECTbase
- Comfort Upholstery



\*Custom configuration also available – speak to your Henry Schein EQ Specialist for more information and pricing.

## A-DEC 500 PRO

Everything you've come to appreciate about the A-dec 500 dental chair, is now available with a new delivery. Enabled with A-dec+ and an updatable software platform, the A-dec 500 Pro delivery system supports your dental team with a new level of connection.

### INTELLIGENT CONTROL

Intuitive, connected equipment is consistent and predictable.

### CONNECTIVITY

A-dec+ paired with a software-based platform brings technological flexibility to your practice.

### FLEXIBLE INTEGRATION

Integrating new clinical capabilities with the existing platform keeps equipment relevant.

### OPTIMAL ACCESS

Get in close and comfortably position everything you need within reach.

### SUPERIOR CARE

Comfort and stability add up to a superior patient experience.



## DS 7 TOUCH PANEL

With an advanced responsive surface and 7inch durable glass touch screen, the Dynamic Screen 7 (DS7) offers a simplified interface that displays only the information you need for the procedure at hand—so you can focus on your patients.

## A-DEC 300 PRO

The A-dec 300 Pro combines a full set of advanced features and reliable performance with an intuitive, easy-to-use system. Enhanced control pads provide an intuitive, responsive, and dynamic user interface. More functionality. More versatility. More forward-thinking design.

### EVOLVED

Enhanced features make working more comfortable and intuitive.

### CONNECTED

An updatable software platform helps futureproof your practice.

### ACCESSIBLE

Close in to your patient, everything you need is within reach.

### FLEXIBLE

Easily configure your system for the way you like to work.

## CP5 CONTROL PANEL

The A-dec 300 Pro brings you a better operator experience with the Control Pad 5 (CP5) and Control Pad 5i (CP5i)—both with ultrasonic scaler integration. Enjoy seamless transitions during treatment with access to your chair, handpieces, clinical devices, cuspidor, and light functions all on one control pad. Navigate easily and accurately with just the touch of a finger on the smooth, impact-resistant glass surface.



## PLANMECA i CLASSIC

PLANMECA

**ONLY \$39,900**

## STOCK CONFIGURATION INCLUDES:

Touch Interface, Solanna Operating Light, Fibre Optic High-Speed Tubing, Luzzani 3-way Syringe, Bien-Air MCX Brushless Micromotor with LED, EMS Piezon Scaler and Standard Upholstery.

**MORITA IC5 HD****NOW ONLY \$26,090**

- Extremely fast scan time of 5.5 seconds
- High resolution panoramic images at 96um
- Reliable fully automatic exposure system
- Light weight with a small footprint
- Easy patient positioning
- Ultra low dose



SAVE  
\$1K

**PLANMECA PRO ONE****PLANMECA****NOW ONLY \$32,900**

- Easy patient positioning
- Work with an unrestricted view of your patient
- Clear graphical user interface provides user guidance
- Laser assisted patient positioning
- Autofocus feature for perfect panoramic exposures every time

\*Excludes Software



SAVE  
\$2.5K

## PLANMECA PROMAX 3D CBCT

**PLANMECA**



Planmeca ProMax® 3D Classic



Planmeca ProMax® 3D Plus



Planmeca ProMax® 3D Mid

### A Quality solution for all your imaging needs

- Premium quality dental CBCT images with built-in technology innovations reducing effects of patient movement, noise and metal artefacts
- 3D imaging with lower patient doses without statistical reduction in image quality
- Quality panoramic images with a 3D sensor

ALL PLANMECA PROMAX 3D SYSTEMS COME EQUIPPED WITH:

- SmartPan System
- Ultra Low Dose Technology
- Bitewing Panoramic Program
- ProMax Extended FOV
- Planmeca CALM

(Romexis Software Add-ons optional)



## PLANMECA CALM®

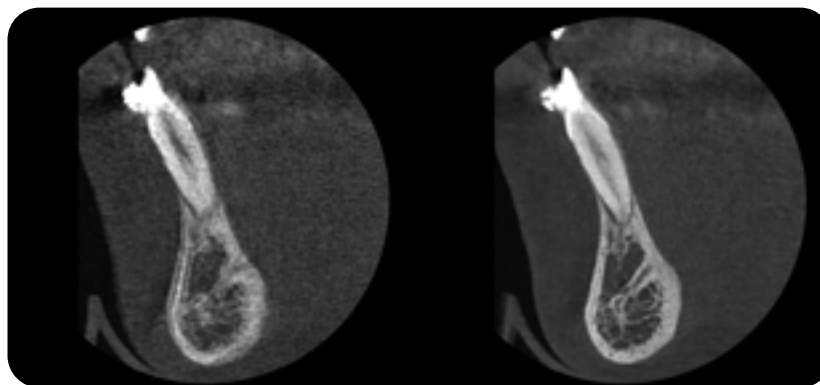
As the first ever end-user solution for patient movement artifact correction in the dental industry, the Planmeca CALM algorithm not only saves time but also guards patients from unnecessary exposures.

The name CALM stands for Correction Algorithm for Latent Movement, and is particularly beneficial when imaging restless or livelier patients such as children, individuals with special needs, or elderly patients.

Planmeca CALM works with all volume and voxel sizes and adds less than 30 seconds to the overall reconstruction time. The feature can be applied after the scan is complete, but also before exposure to ensure that the volumes are already corrected when they are accessed in the Planmeca Romexis software.

“Whatever the case, it is being able to correct movement artefacts ‘in house’ rather than having to resort to retakes or sending the image to Planmeca for enhancement which is key here. When dentists are able to make the correction themselves, the end result is improved diagnostics, time saved, reduced costs, and less exposure to radiation.”

(Dr Lilja – Planmeca Imaging Specialist)



**WITHOUT CALM**

**WITH CALM**

## PLANMECA ROMEXIS

Planmeca Romexis is the most powerful dental software platform in the world. It offers a rich selection of tools and features for all needs and specialties.

### All-in-one dental software

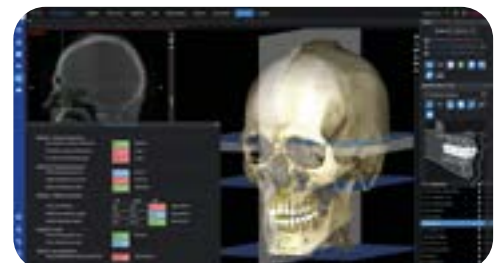
Romexis allows capturing, viewing and processing all types of data in the same system – with all 2D and 3D images and CAD/CAM cases in the same database. The dental software’s extensive specialist tools, real-time monitoring possibilities, and unique connectivity with Planmeca equipment help make every day more efficient and enjoyable.

### Open and compatible

Digital dentistry is advancing quickly. To make sure you can always use the best technology available, Romexis has been designed for open integration. It is easy to import and export 2D and 3D images in industry standard formats or to launch data directly into 3rd party software.

### Grows with your clinic

Romexis scales to your needs – from a single-chair clinic to a large hospital or group practice. Start with what you need and add more users and optional modules later on. You can grow from 2D to 3D imaging and CAD/CAM with full implant planning functionalities. With over 100 updates over the past 12 years, Planmeca have a strong and proven record of steadily adding new features and improvements that allow users to work with the latest dental technology for years to come.





**BUNDLE OFFER**  
**\$15,680**

**SAVE \$3K**

\*Excludes Software



## PLANMECA BUNDLE OFFER

### PROX INTRAORAL X-RAY

Incredibly reliable and popular intraoral x-ray, with over **100 sold annually**.

- Incredibly Long arm reach of 2038mm an impressive 80 inches
- Small focal spot of 0.4mm
- Sensor integration possible

### PROSENSOR

#### HIGH DEFINITION IMAGES

- Versatility of either USB or Ethernet connection
- Can be integrated with Planmeca Prox X-Ray Unit
- Compact size – Size 2 only included in bundle price.

### PSPIX® 2 PHOSPHOR PLATE SCANNER



**LAUNCH PRICE: \$12,990**

#### Available NOW

This trustworthy assistant will provide you with clear and accurate results, empowering you to focus on what matters most: **your patient**.

#### PSPIX 2 is AUTONOMOUS

PSPIX 2 combines a number of autonomous features that guarantee an efficient workflow without burdening you with a number of actions to do yourself.

#### PSPIX 2 is EFFICIENT

PSPIX 2 is a concentrate of technology, guaranteeing clarity and contrast of your images. It's also one of the fastest imaging plate scanner, with a complete scan process of 12 seconds.

#### PSPIX 2 is ADAPTABLE

Its revolutionary size requires so little space that it can easily fit into any practice. It streamlines your workflow by being shareable with up to 10 users.

**NEW**







## DURR PSP FROM ONLY \$13,400

### VISTASCAN MINI EASY 2.0

**NOW ONLY \$13,400**



**SAVE  
\$1K**

The VistaScan Mini Easy 2.0 works with VistaScan IQ image plates to ensure that it lives up to its full potential. Alongside the tried-and-tested technology and outstanding image quality, this combination offers a wide range of new features that noticeably improve user friendliness, efficiency and reliability. The high-resolution, 2.4" colour glass display provides a user interface that is very easy to use.

### VISTASCAN MINI VIEW 2.0

**NOW ONLY \$16,790**



**SAVE  
\$1K**

The design of the new VistaScan Mini View 2.0 is futuristic, while the technology behind it is just as pioneering. It uses the latest image plate technology and works together with VistaScan IQ image plates to open up many new AI-based features. With Smart Scan Workflow, work becomes even more efficient thanks to the ability to link IQ image plates directly to the patient. Together with the superior image quality of the tried-and-tested PCS technology, this new system will make your dental practice completely fit for the future.

### VISTASCAN ULTRA VIEW

**NOW ONLY \$18,800**



**SAVE  
\$1.5K**

Increased performance for maximum efficiency in the form of VistaScan Ultra View, a high end device that combines the superior image quality of PCS technology with excellent performance and innovative, groundbreaking features.

- Dual Track
- For all intraoral formats
- High-resolution 7" touchscreen display
- Patented PCS technology for exceptional image quality

## SCAN EXAM ONE



**NOW ONLY \$8,700**

**SAVE  
\$2.7K**

The Scan eXam One is perfect for any dental office that demands a top-quality digital intraoral imaging solution for their everyday operation

- Provides quick, clear clinical images
- Compatible with multiple image plate sizes
- Suitable for chairside or shared use
- Easy and affordable to maintain
- CLINIVIEW and TWAIN Driver Software



**SCICAN STAT/M 6000 B VACUUM AUTOCLAVE**

**LAUNCH PRICE: \$10,500**

**STAT/M® B - with improved G4+ Technology**

Introducing the new B-Class autoclave. The small space miracle that can easily keep up with the big ones thanks to flexible loading, short cycles and digital features.

**Small Footprint but Great Performance**

The STAT/M B G4+ autoclave with a 6-litre chamber has a small footprint like its predecessor, the STAT/M 5000. It offers a modern design and flexibility in loading options. The reprocessing of **2 cassettes or 12 pouches** offers enough capacity to meet the needs of any size practice. On top of all of that, it perfectly sterilises and dries wrapped instrument loads in as little as **27 minutes**.

**Convenient Automated Filling and Draining Options**

No more hassle of manual top filling and draining. In addition to the standard manual filling and draining options, the STAT/M B G4+ vacuum autoclave offers automatic filling and direct-to-drain options to allow a fully automated Stericentre set-up.

**Programmable – Works on Your Command**

Schedule starts and set the exact time you want to run a sterilisation cycle or daily tests – whenever it suits your office's workflow. The Delayed Start improves efficiency by allowing the test cycles to be completed when the office opens. Helix Vacuum & Bowie-Dick Test.

**Smart Features for Improved Automation and Workflow**

Thanks to the online User Portal, you have the full overview. Cycle data storage, advanced reporting, manuals, video tutorials and user interface software updates are displayed on the screen of the unit.

**G4+ Technology Connectivity & Data Logging**

WiFi-enabled G4+ Technology allows for traceable load release, barcode printing and instrument tracking enhanced documentation features and data storage.

**MOCOM B FUTURA 17L + MOCOM TETHYS H10 PLUS WASHER DISINFECTOR**

**BUNDLE OFFER**  
**\$20,990**

**MOCOM B FUTURA 22L AT THE 17L PRICE**

**NOW ONLY \$13,500** 22L NORMALLY \$14,890

Same Price , Same outer footprint - 5L increase in chamber volume

- Built-in water processing system - can be used with tap water
- 4.3" LCD colour touch display
- Wifi and ethernet port comes standard

**10% OFF ALL PLANT EQUIPMENT**

**TRIO COMPRESSOR**  
DURR



**VSA 300S SUCTION**  
DURR



**AC300Q COMPRESSOR**  
CATTANI



**TURBO SMART SUCTION**  
CATTANI



## MILLING SOLUTIONS STARTING FROM \$39,500



### E4

### EASE CLASS

#### For easy entry into same-day dentistry.

Impress your patients with a quick and comfortable treatment and produce perfect restorations – easily and in just one session. Your patients won't thank you enough.

- No compressed air required with AIRTOOL technology
- Plug and Mill! Can be combined with any scanner
- Wet and (optional) Dry processing of block materials
- Modular machine design to optimize servicing and maintenance

VH-263335



### N4+

### PERFORMANCE CLASS

#### The wet milling powerhouse.

The N4+ is a wet processing machine for grinding glass ceramic, composite and zirconia blocks as well as titanium abutments. This machine combines the high precision and fast drives in an extremely compact housing.

- Mill up to 3 blocks with 45 mm length at the same time
- PUREWATER: no grinding additives necessary, except for titanium processing
- Easy milling of implant screw channels – saves costs on pre-drilled blocks
- Automatic changer for 8 tools

VH- 247979



### Z4

### HIGH END CLASS

#### Same-day dentistry. Unparalleled perfection.

The Z4 is a wet processing machine for grinding glass ceramic, composite and zirconia blocks as well as titanium abutments. This machine combines the high precision and fast drives in an extremely compact housing.

- Restorations in under 10 minutes
- Wet grinding of glass ceramic, composite and zirconia blocks as well as titanium abutments
- Integrated CAM PC with touchscreen and Wi-Fi module
- Built-in compressed air - no compressor needed

VH-Z4IMPRESSION



# UNLEASH PRECISION IN DENTISTRY WITH OUR EXCLUSIVE DENTAL MILLING DEMO



## CALLING ALL DENTISTS

Elevate your practice to new heights of precision and efficiency with an in-house Dental Milling demo. Experience the seamless integration of cutting-edge technology as you craft a flawless crown case from start to finish.



### STEP 1: Prep and Scan your patient

Book, prep and scan your patient for a posterior crown case following the prep guidelines provided.

### STEP 2: Crown Design Collaboration

Join forces with our expert CAD/CAM team to design the perfect crown. Explore customisation options, ensure the perfect fit, and witness your vision come to life on the screen.

### STEP 3: State-of-the-Art Milling

Experience the power of precision with our VHF milling machines, using GC Lisi blocks for unparalleled results. Watch as your design is transformed into a tangible, high-quality crown, ready to enhance your patient's dental experience.

### STEP 4: Polish

Your Territory Manager and the GC team take over to demonstrate the art of polishing. Learn essential tips and tricks for achieving a flawless finish, ensuring patient satisfaction and lasting aesthetics.

### STEP 5: Place your Crown

Our team will be on-site to assist, offering valuable cementation insights and support as you place the crown with confidence.

**Elevate your dental practice with precision, efficiency and unmatched convenience.**

**SCAN THE QR CODE TO RESERVE YOUR SPOT FOR A DENTAL MILLING DEMO TODAY AND REVOLUTIONISE YOUR APPROACH TO CROWN CASES.**





## STREAMLINE YOUR IN-PRACTICE LAB



**E5**

**FROM \$45,800**

### Easy dry milling for practice and lab.

The E5 requires no compressed air, therefore you have maximum freedom in the choice of the installation site and also benefit from minimal operating costs.

- Low weight (47kg) and compact housing
- Enables a fast and cost-effective entry into CAM production
- Mills almost all materials up to CoCr sintered metals in a 98.5 mm disc format, holders available for 110 mm discs and blocks
- Perfect back-up or cost-effective starter mill

VH-263334



**E3**

**FROM \$29,500**

### Automate your occlusal appliance workflow.

The new E3 enables you to automate the precision trimming of occlusal appliances. You can expect the very best results in the shortest time. The machined fabrication also ensures a consistently high quality.

- Quickly and easily cut out occlusal appliances from different material manufacturers
- Complete processing of aligners and retainers in under 60 seconds
- Automatic trimline recognition
- Weighs just 25kg with a small footprint and no need for compressed air

VH-263337



### CAMEO FAST SINTERING FURNACE LARGE

**GET A BONUS 50 X PROZIRC DISK PACKAGE**

- Fast and Slow Sintering cycles
- Remote monitoring and management
- Large capacity

AI-CSF-200L



### CAMEO PORCELAIN FURNACE

**Aidite**

**GET A BONUS AIDITE LITHIUM DISILICATE 100 X BLOCK PACKAGE**

- Crystallise Lithium Disilicates in just 9 minutes
- Remote monitoring and management

AI-CFP-200B



## EASE SCAN AND MILL PACKAGE

### START TODAY FROM \$91,950



#### INCLUDES:

- Trios 3 Wireless Scanner
- HP Z Book Laptop
- 3Shape Design Studio
- VHF E4 with Wet Milling
- Aidite Cameo Porcelain Furnace
- BONUS 50x Aidite Lithium Disilicate Blocks

## HIGH END SCAN AND MILL PACKAGE

### START TODAY FROM \$127,280



#### INCLUDES:

- Trios 5 Scanner
- Dell Precision Laptop
- 3Shape Design Studio
- VHF Z4 Wet Mill
- Aidite Cameo Porcelain Furnace
- BONUS 50x Aidite Lithium Disilicate Blocks

## ZUMAX OMS2380 FLOOR STANDING MICROSCOPE

zumax



**NOW ONLY \$32,900**

### Automate your occlusal appliance workflow.

The 2380 R2 is the best selling model in the Zumax range of microscopes, offering manual continuous zoom, integrated 4K video capture, advanced FreeFlow balancing arm technology and an amazing variable working distance of 200 – 450mm.

Package includes 20% : 80% Extender and Beam Splitter and Binocular Rotation Ring.

SAVE  
OVER  
**\$5K**

**For more information, or to request a quote,  
please contact your Henry Schein Equipment Specialist.**



**EDWARD HARRISON**

021 796 069

edward.harrison@henryschein.co.nz



**DANIEL ELS**

021 750 609

daniel.els@henryschein.co.nz



**MICHAEL FINDLAY**

022 016 5898

michael.findlay@henryschein.co.nz



**PAUL MACDOUGALL**

022 342 4900

paul.macdougall@henryschein.co.nz

 **HENRY SCHEIN®**

**Rely on Us™**

\*Prices are effective until 30/4/2024 and exclude GST, freight, installation and software unless otherwise specified. Prices or offers in this publication are not applicable to Government or Corporate Accounts. Equipment configurations may differ from the images shown in this flyer.